

# TEST REPORT

Reference No. : TIC-WD201712C1503 Date : Dec.13, 2017

Page No. : 1 of 4

Client : JIANDE DIHUA DECORATION CO.,LTD  
Address : 237 YANLING ROAD,MEICHENG TOWN,JIANDE CITY,ZHEJIANG,CHINA

Control No.: 280162505  
Contact E-mail: jowang@tuv-intercert.org.cn

The following merchandise was (were) submitted and identified by the client as:

Name of Product : GLASS POT  
Test Model : /  
Main Materials: GLASS  
Model May Cover : /  
Sample Received : Dec.06, 2017  
Test Period : Dec.06, 2017 - Dec.12, 2017  
Test Request : Please refer to following form.  
Test Method : Please refer to next pages  
Test Result: Please refer to next pages  
Conclusion : Please refer to next pages



## Result Summary

As requested by the client, according to German Food, Articles of Daily Use and Feed Code of September 1, 2005 (LFGB), Section 30 and 31, General Requirement (Article 3) in EU Regulation No. 1935/2004 to do the following test items:

Test Items:

1. Sensorial examination odor and taste test.
2. Leachable Cadmium and Lead content for Glass Materials

Conclusion:

PASS  
PASS

Issued by:



**TÜV INTERCERT GmbH**  
Technical Certifier

# TEST REPORT

Reference No. : TIC-WD201712C1503 Date : Dec.13, 2017

Page No. : 2 of 4

## TEST RESULTS:

### 1, Sensorial examination odor and taste test

**Test Method:** sensory test with reference to DIN 10955:1983(2004)

**Test Procedure:**

- 1) wash the sample with distilled water and dry it at room temperature
- 2) total immerse by water and keep at 100°C for 2hours
- 3) cool to room temperature
- 4) degust the taste and evaluate
- 5) test the blank at the steps from 1) to 4)

Test Parameter	Results	Maximum Permissible Limit
	Whole product	
Sensorial examination odor, point scale	0.0	2.5
Sensorial examination taste, point scale	0.0	2.5

Scale evaluation: 0, no perceptible odor taste

- 1, odor and taste just perceptible (still difficult to define)
- 2, moderate odor and taste
- 3, moderately strong odor and taste
- 4, strong odor and taste



### 2, Extractable Lead, Cadmium for Glass Lid

**Test Method:** with reference to EN 1388-1:1996 –Materials and articles in contact with foodstuffs - Silicate surfaces - Part 1: Determination of the release of lead and cadmium from ceramic ware, analysis was performed by ICP-AES.

Sample No.: 3#	Result				Flatware Limit
	1#-1	1#-2	1#-3	1#-4	
Released Lead, mg/l	<0.1	<0.1	<0.1	<0.1	See table 1
Released Cadmium, mg/l	<0.01	<0.01	<0.01	<0.01	
Released Cobalt, mg/l	<0.01	<0.01	<0.01	<0.01	<0.1
Volume of 4% acetic acid used for lid, ml	1400	1400	1400	1400	---
Surface area, dm <sup>2</sup>	6.20	6.20	6.20	6.20	---
Depth, mm	130	130	130	130	---
Diameter, mm	100	100	100	100	---

# TEST REPORT

Reference No. : TIC-WD201712C1503 Date : Dec.13, 2017

Page No. : 3 of 4

Permissible limit of Lead and Cadmium is quoted from DIN 51032:1986

Table 1, permissible limits for articles made from ceramics, glass ceramics with decorated inner surfaces, and for articles with enameled surfaces.

Items		Flatware		Hollowware	
		Lead, mg/dm <sup>2</sup>	Cadmium, mg/dm <sup>2</sup>	Lead, mg/l	Cadmium, mg/l
Tableware Kitchen Equipment	Made from ceramic, glass and glass ceramic	0.8*	0.07*	4.0*	0.3*
	Enameled	0.8	0.07	0.8	0.07
Cooking & baking utensils, receptacles also used as packaging storage container	Made from ceramic, glass and glass ceramic	0.4	0.05	1.5*	0.1*
	Enameled	0.1	0.05	0.4	0.07
Samples for enameled container, part of equipment and water heater		0.1	0.05	---	---

\*, in agreement with EC directive

Note : 1) % = Percentage by weight;

2) n.d. = Not detected, less than MDL;

3) "---" = Not Regulated;

4) MDL = Method Detection Limit.

## TEST PART DESCRIPTION:

1#, Clear Glass Pot

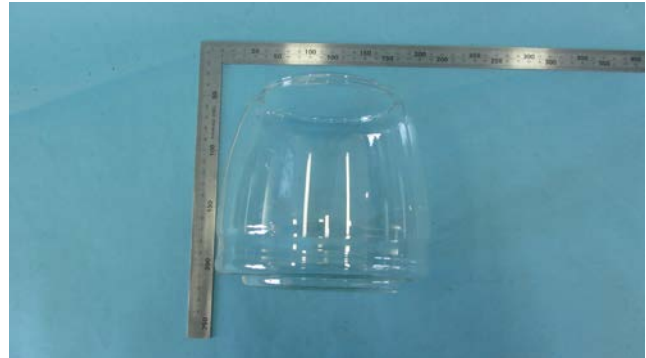
\*\*\*\*\* To be continued \*\*\*\*\*

# TEST REPORT

Reference No. : TIC-WD201712C1503 Date : Dec.13, 2017

Page No. : 4 of 4

## SAMPLE PHOTO



1#

\*\*\*\*\* END OF REPORT \*\*\*\*\*

TÜV®