

TEST REPORT

Reference No. : TIC-WD201712C1502 Date : Dec.13, 2017

Page No. : 1 of 6

Client : JIANDE DIHUA DECORATION CO.,LTD
Address : 237 YANLING ROAD,MEICHENG TOWN,JIANDE CITY,ZHEJIANG,CHINA

Control No.: 280162504
Contact E-mail: jowang@tuv-intercert.org.cn

The following merchandise was (were) submitted and identified by the client as:

Name of Product : GLASS POT
Test Model : /
Main Materials: GLASS
Model May Cover : /
Sample Received : Dec.06, 2017
Test Period : Dec.06, 2017 - Dec.12, 2017
Test Request : Please refer to following form.
Test Method : Please refer to next pages
Test Result: Please refer to next pages
Conclusion : Please refer to next pages



Result Summary

As requested by the client, to do test as following:

Test Items:

1. Lead, Cadmium, Mercury, Hexavalent Chromium, Polybrominated biphenyls PBBs, Polybrominated diphenyl ethers (PBDEs), and Phthalates such as Bis(2-ethylhexyl) phthalate (DEHP), Butyl benzyl phthalate (BBP), Dibutyl phthalate (DBP) and Diisobutyl phthalate (DIBP) in accordance with RoHS directive (EU) 2015/863 amending Annex II to directive 2011/65/EU.

Conclusion:

Refer to detail

Issued by:



TÜV INTERCERT GmbH
Technical Certifier

TEST REPORT

Reference No. : TIC-WD201712C1502 Date : Dec.13, 2017

Page No. : 2 of 6

TEST RESULTS:

1) Pb/Cd/Hg/Cr6+/PBBs/PBDEs/Phthalate content

- Test Method:**
- 1) with reference to IEC 62321-5:2013, determination of Cadmium by ICP-OES
 - 2) with reference to IEC 62321-5:2013, determination of Lead by AAS
 - 3) with reference to IEC 62321-4:2013, determination of Mercury by ICP-OES
 - 4) with reference to IEC 62321:2008, determination of Hexavalent chromium by spot test/ colorimetric method using UV-Vis
 - 5) with reference to IEC 62321-6:2015, determination of PBBs and PBDEs by GC-MS
 - 6) with reference to EN 14372:2004, determination of phthalates by GC-MS

Test Items	Unit	MDL	Test Results	Limit
			1#	
1 Cadmium	mg/kg	2	n.d.	100
2 Lead	mg/kg	2	n.d.	1000
3 Hg	mg/kg	2	n.d.	1000
4 Hexavalent Chromium	mg/kg	2	n.d.	1000
5 Sum of PBBs	mg/kg	---	n.d.	1000
Monobromobiphenyl	mg/kg	5	n.d.	---
Dibromobiphenyl	mg/kg	5	n.d.	---
Tribromobiphenyl	mg/kg	5	n.d.	---
Tetrabromobiphenyl	mg/kg	5	n.d.	---
Pentabromobiphenyl	mg/kg	5	n.d.	---
Hexabromobiphenyl	mg/kg	5	n.d.	---
Heptabromobiphenyl	mg/kg	5	n.d.	---
Octabromobiphenyl	mg/kg	5	n.d.	---
Nonabromobiphenyl	mg/kg	5	n.d.	---
Decabromobiphenyl	mg/kg	5	n.d.	---
Sum of PBDEs	mg/kg	---	n.d.	1000
Monobromobiphenyl ether	mg/kg	0.2	n.d.	---
Dibromophenyl ether	mg/kg	5	n.d.	---
Tribromophenyl ether	mg/kg	5	n.d.	---
Tetrabromophenyl ether	mg/kg	5	n.d.	---
Pentabromophenyl ether	mg/kg	5	n.d.	---

TEST REPORT

Reference No. : TIC-WD201712C1502

Date :

Dec.13, 2017

Page No. : 3 of 6

Test Items	Unit	MDL	Test Results	Limit	
			1#		
Hexabromophenyl ether	mg/kg	5	n.d.	---	
Heptabromophenyl ether	mg/kg	5	n.d.	---	
Octabromophenyl ether	mg/kg	5	n.d.	---	
Nonabromophenyl ether	mg/kg	5	n.d.	---	
Decabromophenyl ether	mg/kg	5	n.d.	---	
6	Di-butyl phthalate, DBP	mg/kg	30	n.d.	1000
	Benzyl-butyl phthalate, BBP	mg/kg	30	n.d.	1000
	Di-2-ethyl hexyl phthalate, DEHP	mg/kg	30	n.d.	1000
	Diisobutyl phthalate, DIBP	mg/kg	30	n.d.	1000

- Note : 1) % = Percentage by weight;
 2) n.d. = Not detected, less than MDL;
 3) "---" = Not Regulated;
 4) MDL = Method Detection Limit.

***** To be continued *****

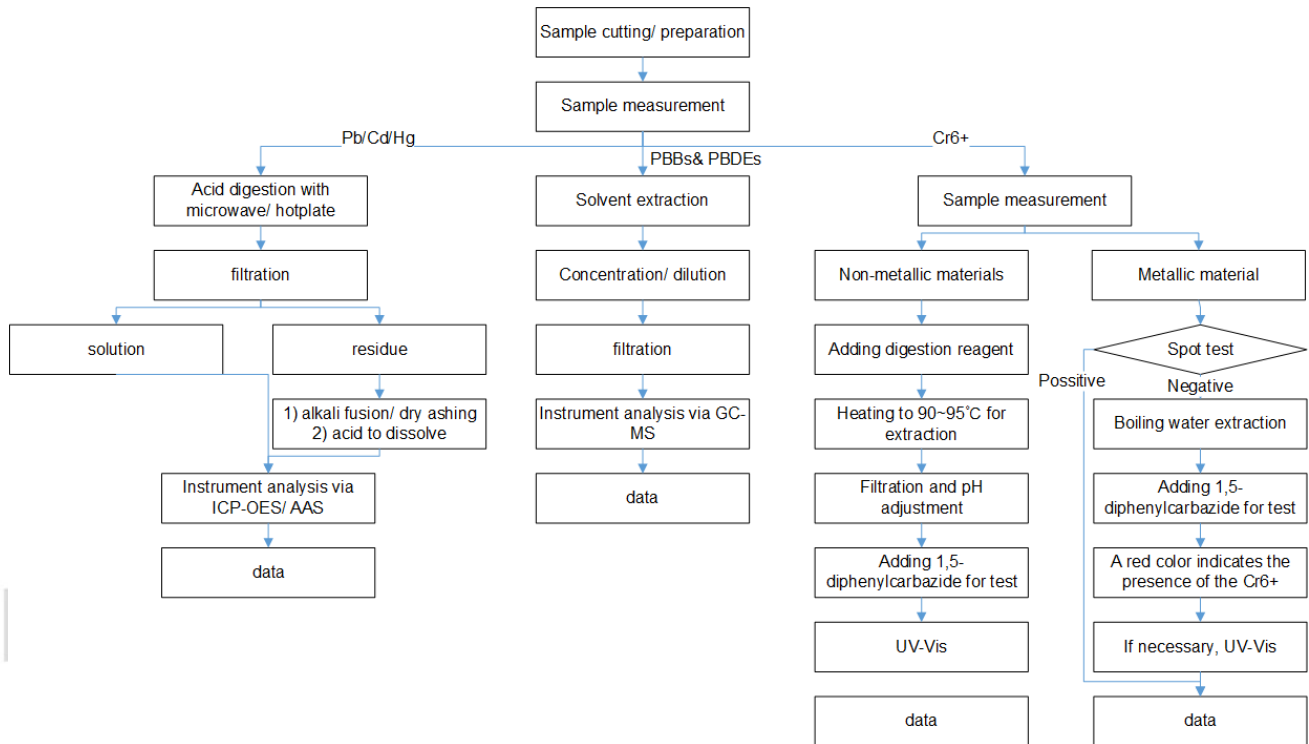
TEST REPORT

Reference No. : TIC-WD201712C1502 Date : Dec.13, 2017

Page No. : 4 of 6

TEST PROCEDURE:

RoHS Testing Flow Chart



***** To be continued *****

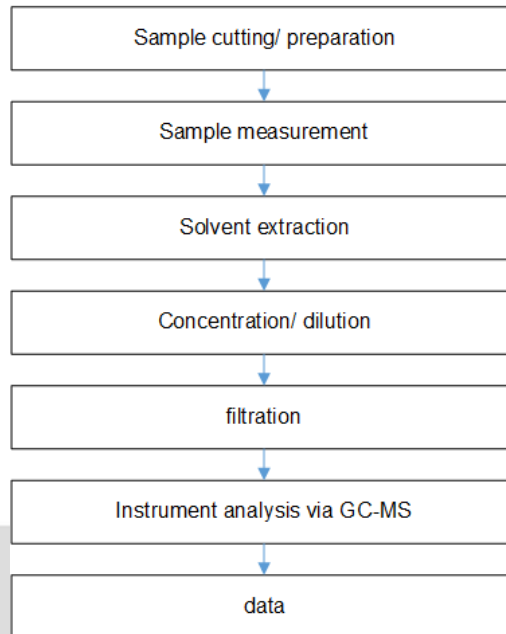
TEST REPORT

Reference No. : TIC-WD201712C1502 Date : Dec.13, 2017

Page No. : 5 of 6

TEST PROCEDURE:

Phthalate Testing Flow Chart



TEST PART DESCRIPTION:

1#, Clear Glass Pot

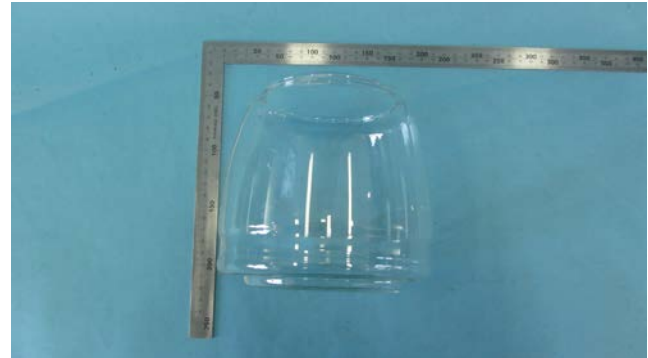
***** To be continued *****

TEST REPORT

Reference No. : TIC-WD201712C1502 Date : Dec.13, 2017

Page No. : 6 of 6

SAMPLE PHOTO



1#

***** END OF REPORT *****

TÜV®